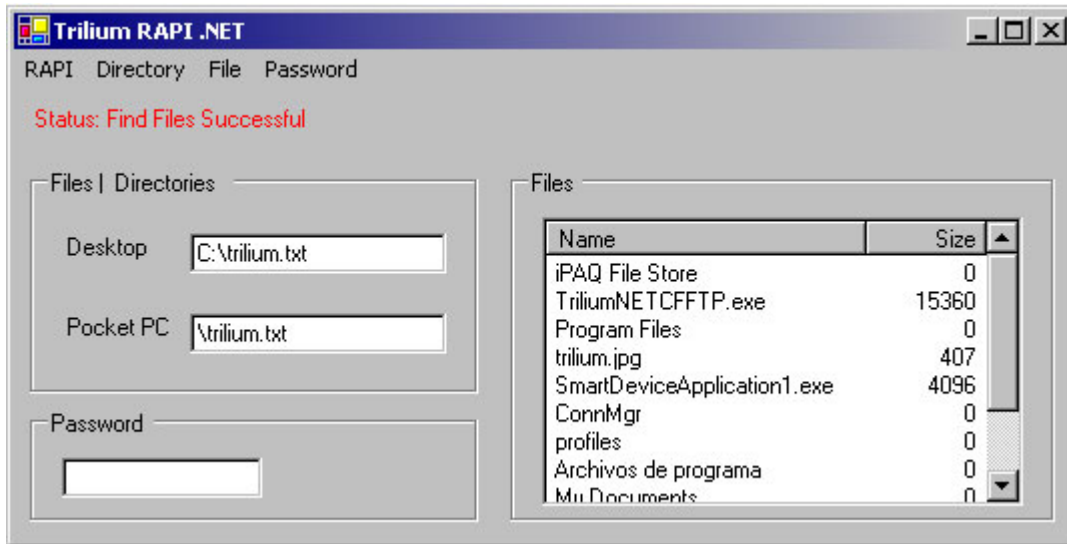




.NET RAPI CONTROL

Features

.NET RAPI Control



Upload/download files from a Pocket PC device to a desktop.

- Upload Files
- Download Files
- Create Directories
- Delete Directories
- View Pocket PC Files

Installation

The RAPI control must be copied into the C:\Windows\System32 directory of the desktop computer or into the same directory where the EXE resides.

Functions

TriliumRAPIInit

Initializes and connects the desktop computer with the Pocket PC device.

```
Declare Function TriliumRAPIInit Lib "TriliumRAPINET.dll" () As Integer
```

TriliumRAPICreateDirectory

Creates a directory in the Pocket PC device.

```
Declare Function TriliumRAPICreateDirectory Lib "TriliumRAPINET.dll"  
(ByVal strDirectory As String) As Boolean
```

strDirectory = New directory path, example: \newdir1

TriliumRAPIRemoveDirectory

Deletes a directory from the Pocket PC device.

```
Declare Function TriliumRAPIRemoveDirectory Lib "TriliumRAPINET.dll"  
(ByVal strDirectory As String) As Boolean
```

strDirectory = Directory path to delete, example: \newdir1

TriliumRAPIUpload

Uploads a file from the desktop computer to the Pocket PC device.

```
Declare Function TriliumRAPIUpload Lib "TriliumRAPINET.dll" (ByVal  
strDesktopPath As String, ByVal strPocketPCPath As String) As Integer
```

strDesktopPath = Path of the desktop file, example: c:\file1.txt

strPocketPCPath = Path of the Pocket PC file, example: \file1.txt

TriliumRAPIDownload

Downloads a file from the Pocket PC device to the desktop computer.

```
Declare Function TriliumRAPIDownload Lib "TriliumRAPINET.dll" (ByVal  
strPocketPCPath As String, ByVal strDesktopPath As String) As Integer
```

strPocketPCPath = Path of the Pocket PC file, example: \file1.txt

strDesktopPath = Path of the desktop file, example: c:\file1.txt

TriliumRAPICheckPassword

Checks if the password submitted is correct.

```
Declare Function TriliumRAPICheckPassword Lib "TriliumRAPINET.dll"  
(ByVal strPassword As String) As Boolean
```

strPassword = Password of the Pocket PC device.

TriliumRAPIFindFiles

Returns all files and directories of a given folder.

```
Declare Function TriliumRAPIFindFiles Lib "TriliumRAPINET.dll" (ByVal  
strDirectory As String, ByVal strFiles As String, ByVal strFilesSize As  
String) As Boolean
```

strDirectory = Directory where to search for files, example *
strFiles = Null string
strFilesSzie = Null String

Purchase

Purchase it at: <http://www.triliumsoftware.com>

Payment methods: PayPal | Credit Card | Wire Transfer

Support

12 months e-mail support.